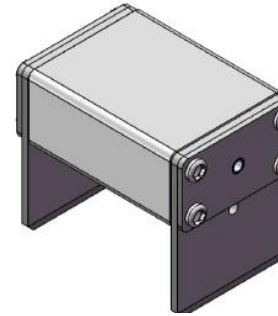


**Product Description**

690Vac, Size 000, aR



**Technical Specifications**

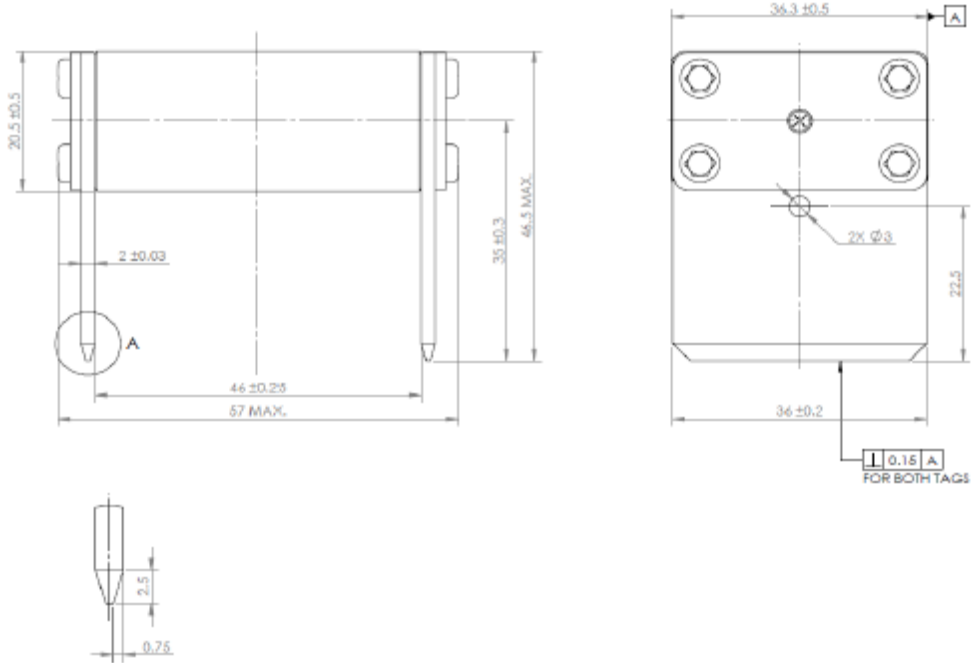
Model (Customized)	Rated Voltage		Rated Current (A)	Power Waste (W)	Breaking capacity
	690Vac	700Vdc			
CL-MF-80	690Vac	700Vdc	80	19	200kA(ac); 20kA (dc)
CL-MF-100	690Vac	700Vdc	100	24	
CL-MF-125	690Vac	700Vdc	125	28	
CL-MF-160	690Vac	700Vdc	160	32	
CL-MF-200	690Vac	700Vdc	200	37	
CL-MF-250	690Vac	700Vdc	250	42	
CL-MF-315	690Vac	700Vdc	315	52	
CL-MF-350	690Vac	600Vdc	350	56	
CL-MF-400	600Vac	600Vdc	400	60	



**BUSSMANN**  
SERIES

CL-MF- xxx(690Vac or 700Vdc/80A~400A)

Dimension Drawing



**Time Current Curve**

