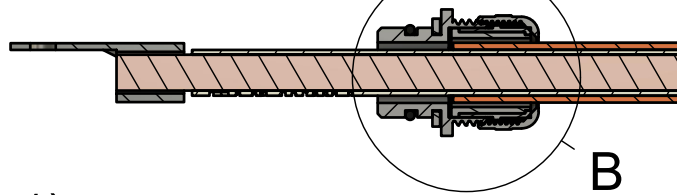
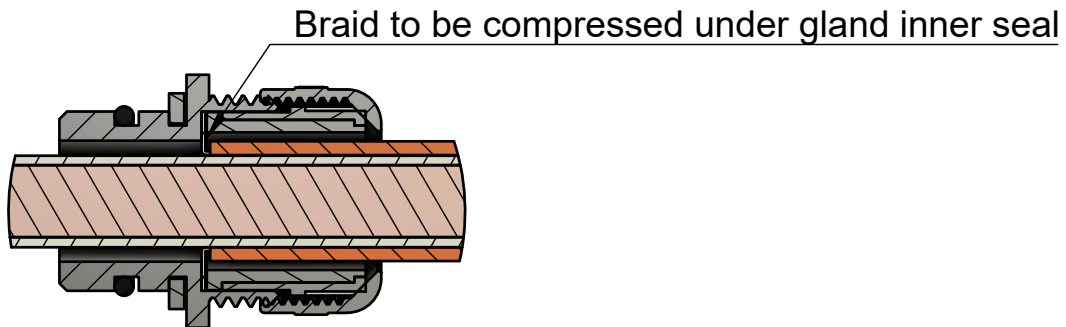


-Distance Lug mounting hole to bottom of gland flange
 -Suitable for 50mm² or 35mm² Shielded cable

A-A (1:2)



B (1:1)



Dept.	Technical reference	Created by Tom De Bree 03-Nov-22	Approved by		
		Document type Informational	Document status Released		
		Title Outlander Inverter HV Cables	DWG No.		
		Rev. A	Date of issue 03-11-2022	Sheet 1/1	